

Accurate calibration, Perfect service!



SPMK 213H

Handheld Pneumatic Pressure Test Pump User's Manual

[Version No.:V1.0]



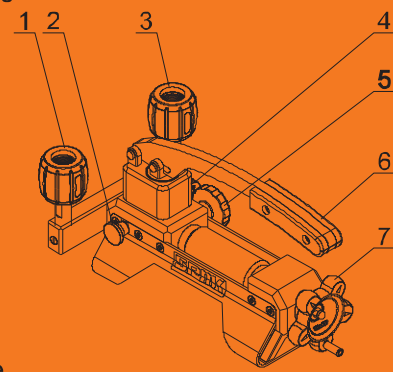
Beijing Spake Technology Co., Ltd.

Specification

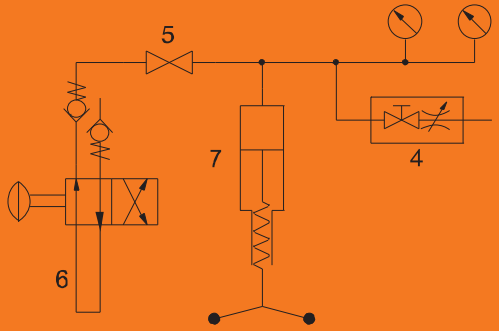
- > Pressure range: (-0.095 ~ 2.5)MPa / (-0.095 ~ 4)MPa
 - > Adjustment resolution: 1Pa
 - > Pressure media: Air
 - > Dimension: (298×179×154)mm
 - > Weight: 2.6kg
 - > Interface size: M20×1.5
- Remark: The vacuum can reach to 95% of the local atmosphere

Structure and Principle

Structure



Principle



- 1&3 - M20×1.5 Quick connector
2 - Switch valve (System produce pressure: pull it out; System produce vacuum: push it in. Be sure convert in the condition of no pressure)
4 - Release valve (clockwise to close/anticlockwise to open)
5 - Isolating valve (isolate the calibration from pressurizing system)
6 - Pressure lever
7 - Fine adjust handwheel (clockwise to increase pressure)

Accessories Included

- > Sealing ring: 10 pcs.
- > Plug: 2 pcs.



Precautions

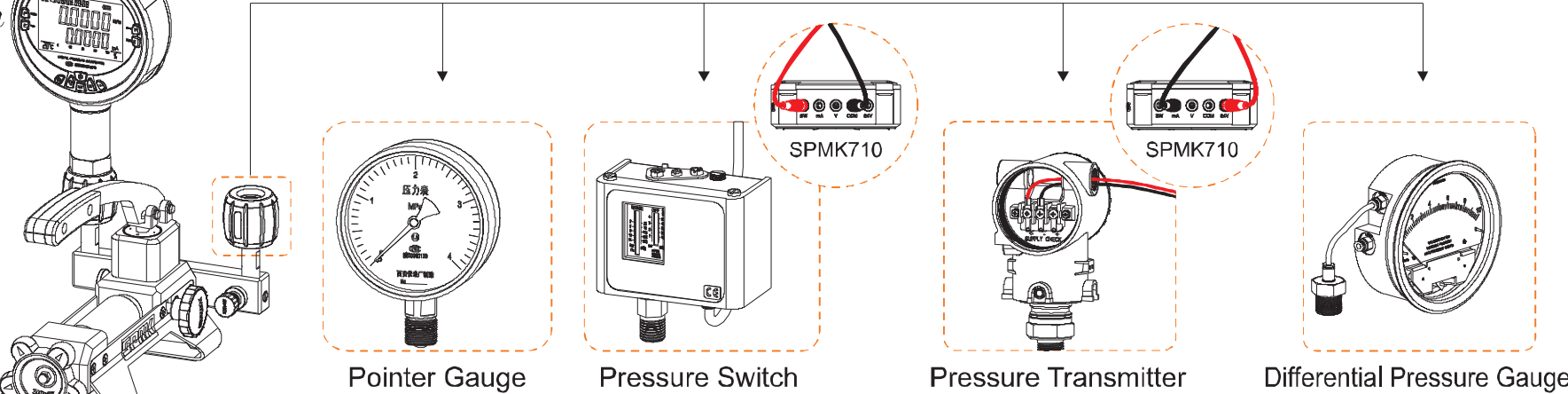
- > If the instrument lumen containing impurities, it must be cleaned before test, or purchase filters.
- > If the instrument containing strong corrosive medium, it must be cleaned before connecting with this equipment.
- > When used in explosive or corrosive environment, should considered the harm done by the medium compression.
- > For long-term preservation, please close the outlet, store the equipment in the clean, dry and non-corrosive environment.
- > Do not exceed the rated pressure.
- > When convert between pressure and vacuum mode, be sure in the condition of no pressure.
- > Any safety problems or damages caused by incorrect operation is out of responsibility of SPMK group.

FAQ and Solutions

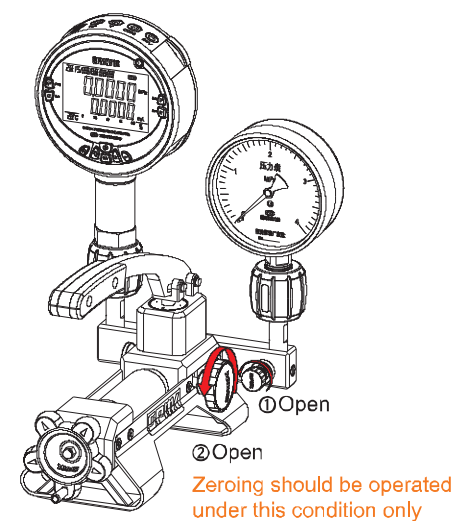
Problems	Causes	Solutions
Hard to use pressure level	The isolating valve is not open.	Open the isolating valve when use the pressure level.
Leak	The isolating valve is not closed.	Close the isolating valve when fine adjust to output pressure.
	The pressure gauge is not tightened.	Tighten the standard pressure gauge or the pressure gauge under test.
	The sealing ring is wear or aging.	Replace the sealing ring.
	The thread of the pressure gauge is not match.	Use the conversion connector (advise to use SPMK conversion connector).
	The thread surface is not smooth.	Put in a PTFE gasket and use tools to turn it tightly.
	The impurity blocks the air circulation.	Repeat pressurizing several times and then release it suddenly, make airflow to bring the impurity out.
Rotating parts is not flexible	Too tightly turned last time.	Do not apply much force when close the valves.
	The threads have no grease.	After long time use, the threads should be coated with some grease.
	The new equipment is not smooth.	Normal, the new equipment need time to running-in.

Basic Operation

A Connection



B Open to atmosphere



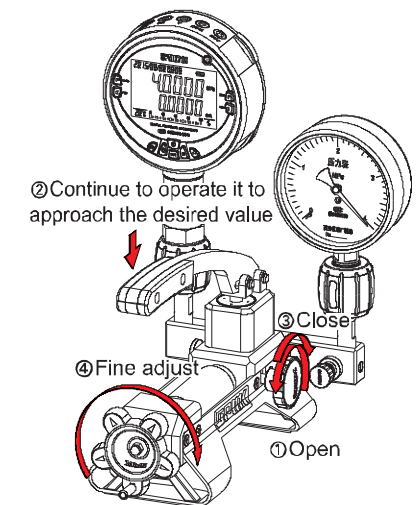
Note: 1. Beijing Spake Technology Co., Ltd. has made every effort to ensure the accuracy of the contents of this manual, but due to the different calibration object, the content may not be comprehensive, please refer to the relevant calibration procedures for using.
2. All photos here are for reference only, please take the actual product as the standard.

Headquarter Address: 6F Jinyanlong Building, Haidian District, Beijing, China

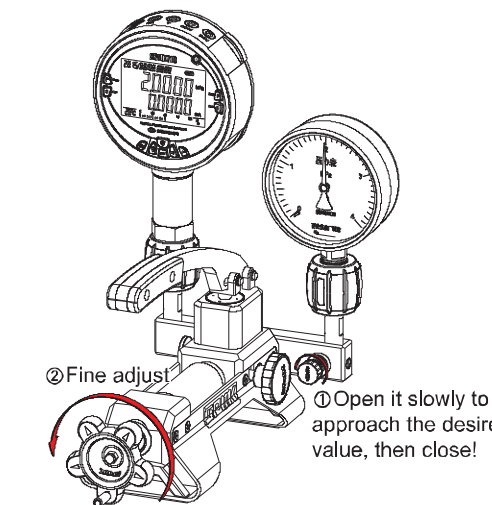
Website: www.cspmkn.com

E-mail: service@cspmkn.com

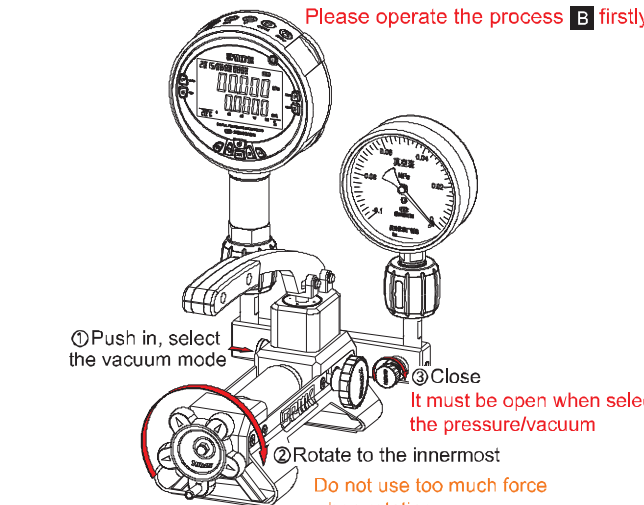
E Repeat pressurizing process



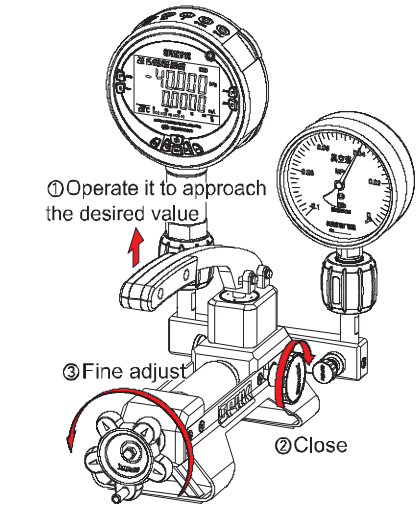
F Decrease pressure process



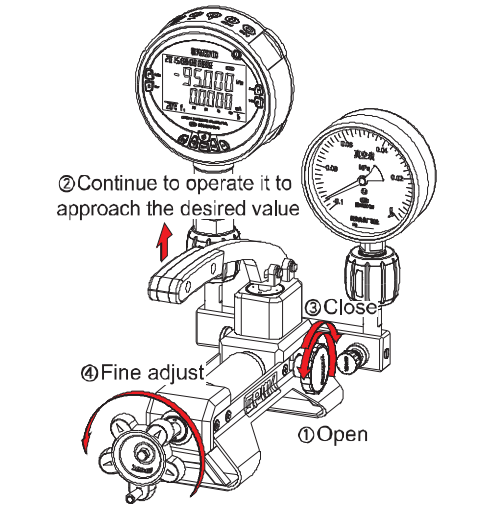
G Prepare for vacuum



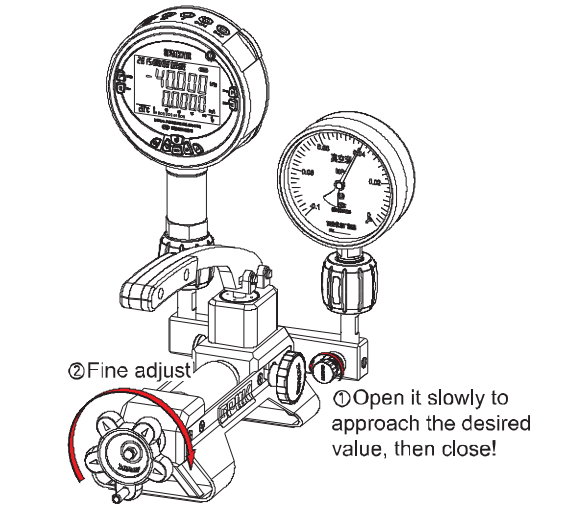
H Vacuum process



I Repeat vacuum process



J Decrease vacuum process



Tel: 400-058-2226, 010-62713169/95/96

Fax: 010-62713168

Aftersales Service: 0373-7883367